

CERNIERE E PERNI PER SPONDE IN FERRO

HINGES FOR STEEL BODIES

GRUPPO 04



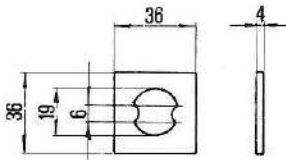
FUNOKARR S.R.L.

COMPONENTISTICA PER VEICOLI INDUSTRIALI

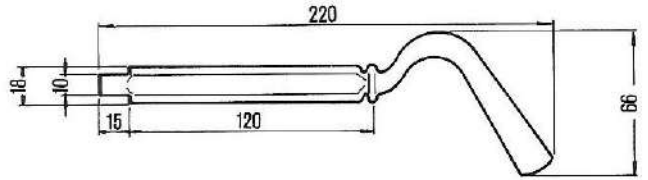
COMPONENTISTICA PER VEICOLI INDUSTRIALI

Via F.lli Rosselli, 31/33 - 40050 Funo di Argelato - BOLOGNA - Italy - Tel. (051) 6646178 - Fax. (051) 8652433

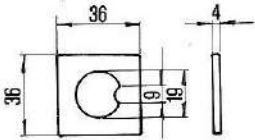
PIASTRINA
Cod. 04.0102



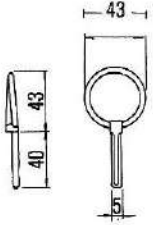
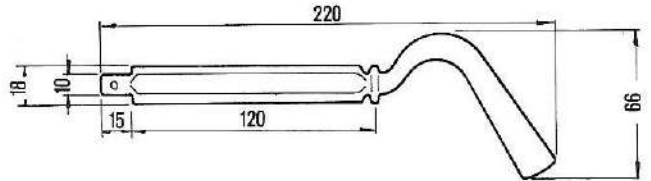
SPINOTTO
Cod. 04.0104



Cod. 04.0106
PIASTRINA



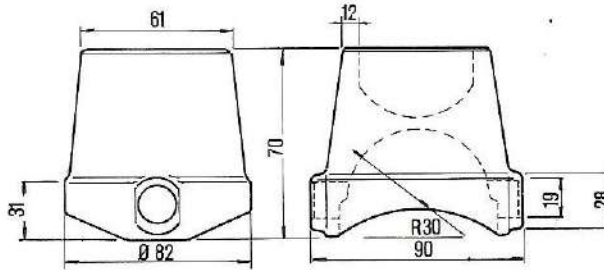
Cod. 04.0108
SPINOTTO



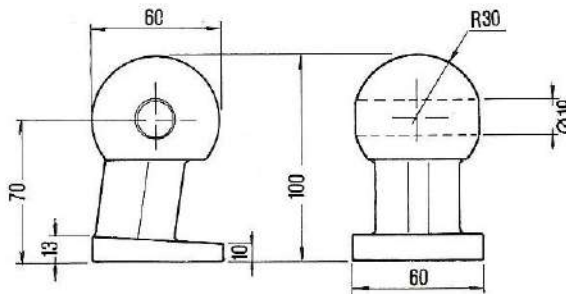
Cod. 04.0110
COIGLIA

SUPPORTO SFERA Ø 60
Cod. 04.0112
gr. 1200

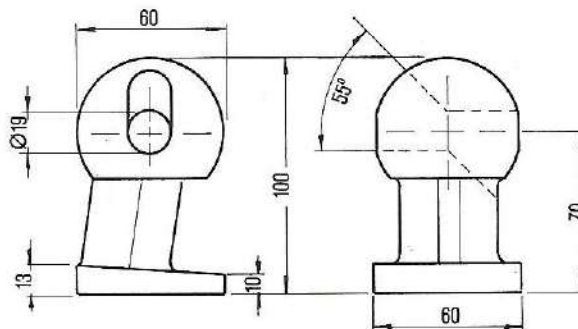
COMPLESSIVO A SFERA
PER RIBALTABILI - DIAM. 60
PORTATA MASSIMA Kg. 2000



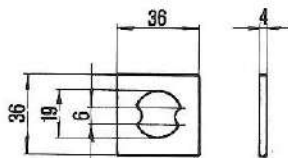
SFERA CON FORO Ø 60
Cod. 04.0114
gr. 1320



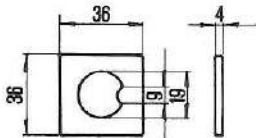
SFERA CON ASOLA Ø 60
Cod. 04.0116
gr. 1210



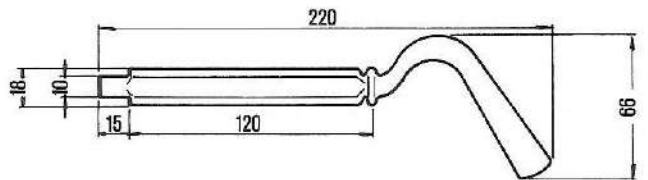
PIASTRINA
Cod. 04.0118



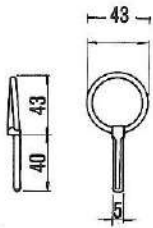
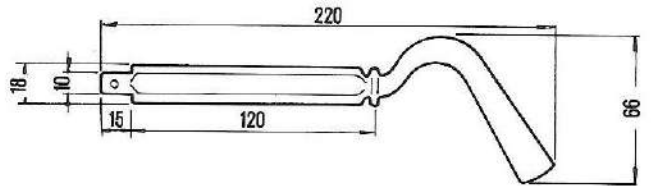
PIASTRINA
Cod. 04.0122



SPINOTTO
Cod. 04.0120



SPINOTTO
Cod. 04.0124



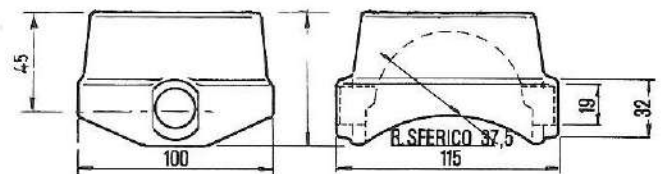
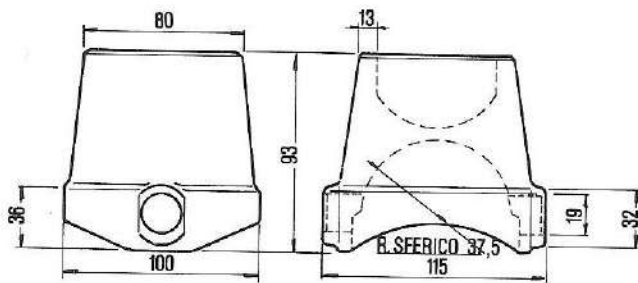
Cod. 04.0126
COPIGLIA

COMPLESSIVO A SFERA
PER RIBALTABILI - DIAM. 75
PORTATA MASSIMA Kg. 5000-

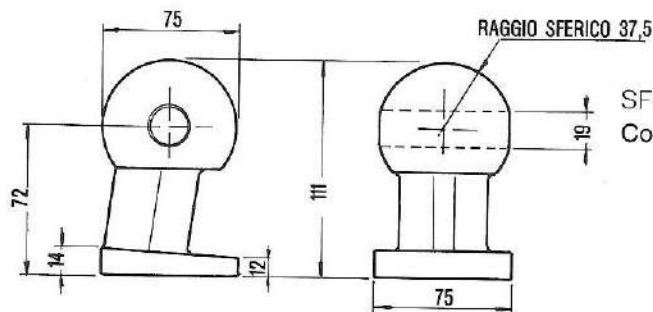
SUPPORTO SFERA Ø 75
Cod. 04.0128
gr. 2500

SUPPORTO SFERA 75 SENZA FORO
Cod. 04.0130

SUPPORTO SFERA 75 ABBASSATO
Cod. 04.0132

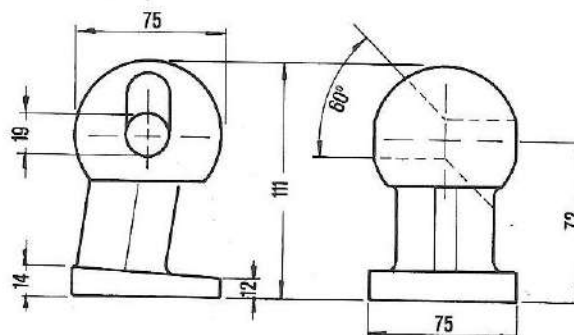


SFERA CON FORO Ø 75
Cod. 04.0134
gr. 2350

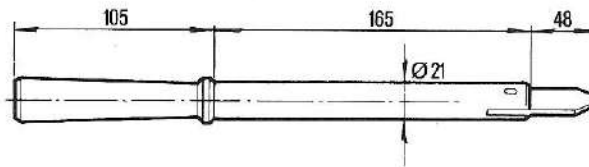


SFERA Ø 75 SENZA FORO
Cod. 04.0136

SFERA CON ASOLA Ø 75
Cod. 04.0138
gr. 2170

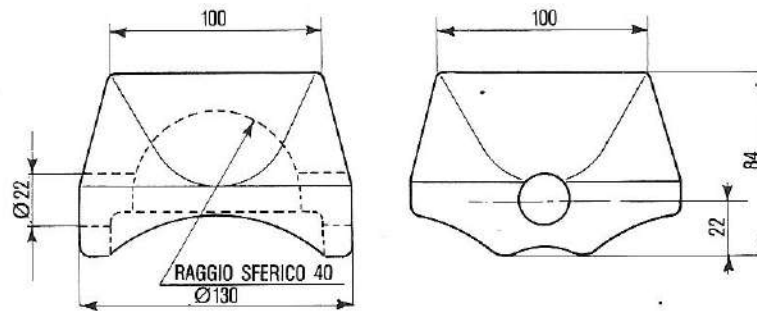


SPINOTTO
Cod. 04.0140

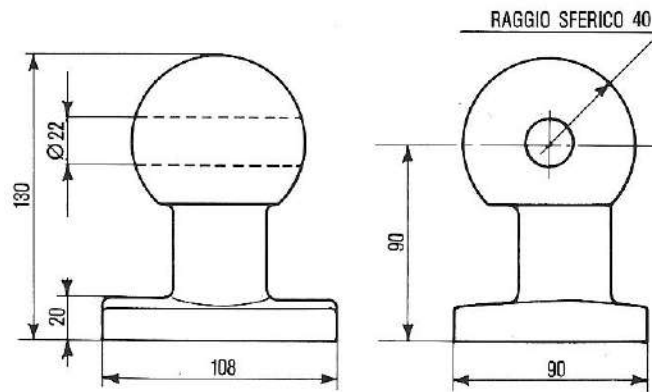


SUPPORTO SFERA $\text{Ø} 80$
Cod. 04.0142
gr. 4100

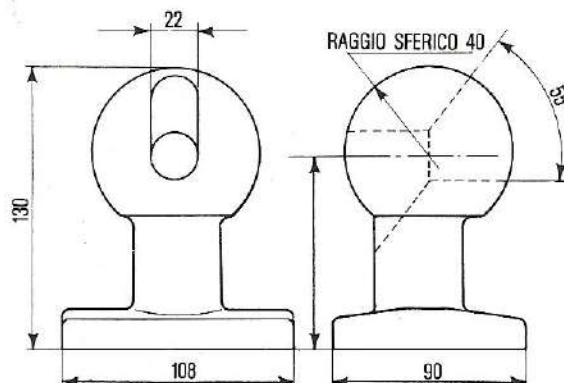
COMPLESSIVO A SFERA
PER RIBALTABILI - DIAM. 80
PORTATA MASSIMA Kg. 15000



SFERA CON FORO $\text{Ø} 80$
Cod. 04.0144
gr. 3280

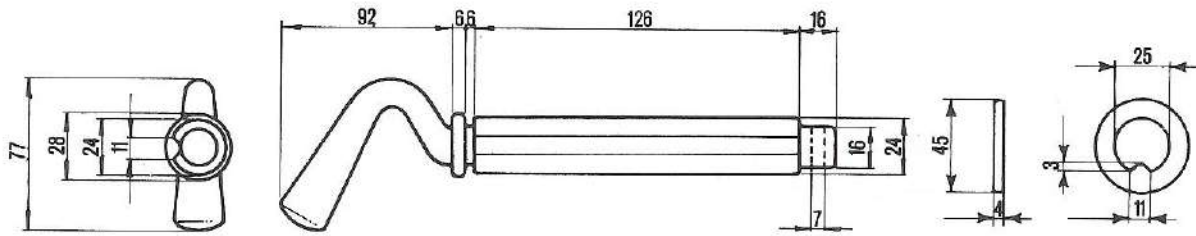


SFERA CON ASOLA $\text{Ø} 80$
Cod. 04.0146
gr. 3150



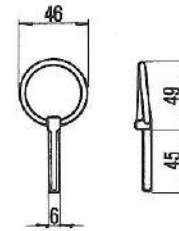
SPINOTTO
Cod. 04.0148
gr. 725

PIASTRINA
Cod. 04.0150

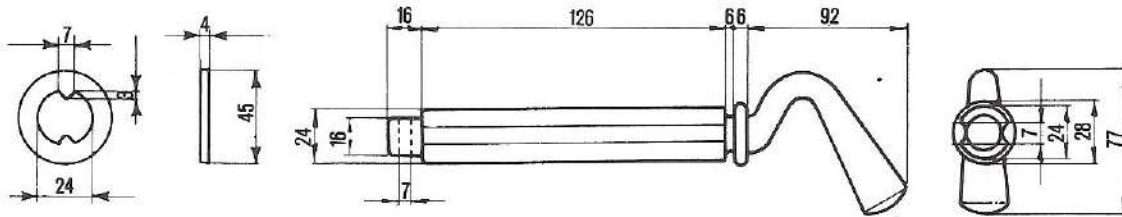


PIASTRINA
Cod. 04.0152

SPINOTTO
Cod. 04.0154
gr. 745



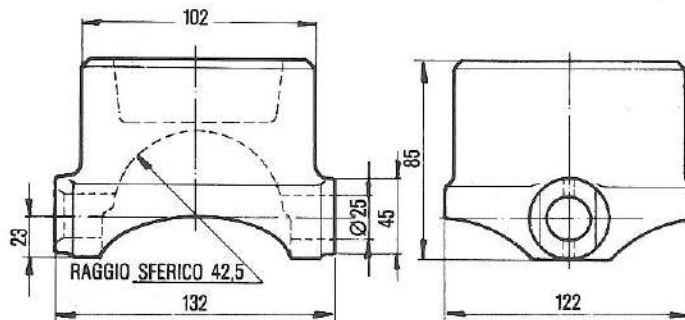
Cod. 04.0156
COPIGLIA



COMPLESSIVO A SFERA
PER RIBALTABILI - DIAM. 85
PORTATA MASSIMA Kg. 15.000

SUPPORTO SFERA Ø 85
Cod. 04.0158
gr. 4120

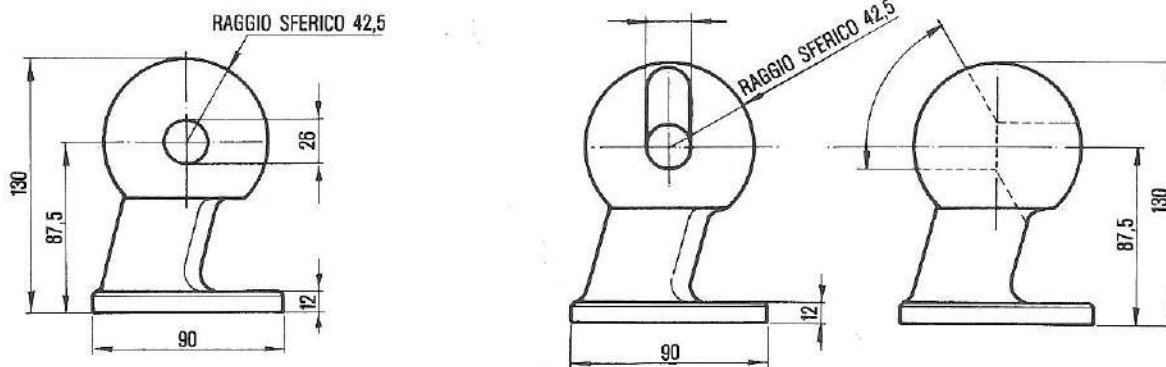
SUPPORTO SFERA 85 SENZA FORO
Cod. 04.0160



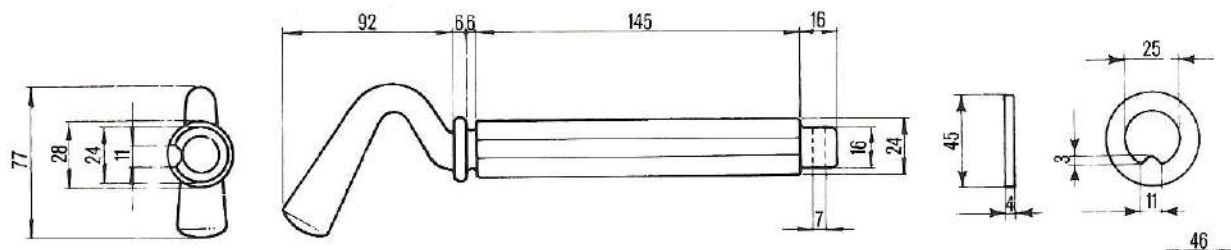
SFERA CON FORO Ø 85
Cod. 04.0162
gr. 3160

SFERA 85 SENZA FORO
Cod. 04.0164

SFERA CON ASOLA
Cod. 04.0166
gr. 3030

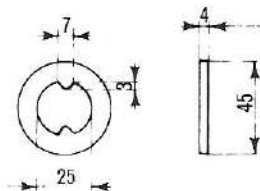


SPINOTTO gr. 775
Cod. 04.0168

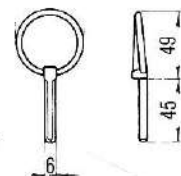
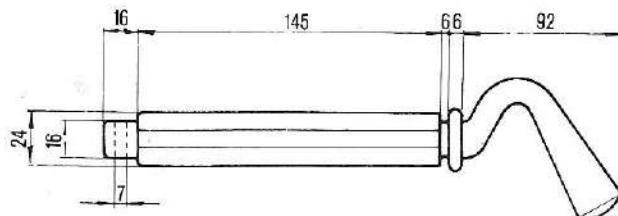


PIASTRINA
Cod. 04.0170

PIASTRINA
Cod. 04.0172



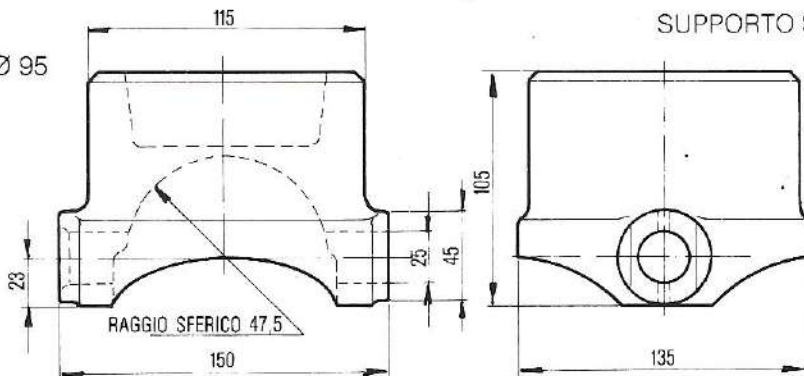
SPINOTTO gr. 790
Cod. 04.0174



Cod. 04.0176
COPIGLIA

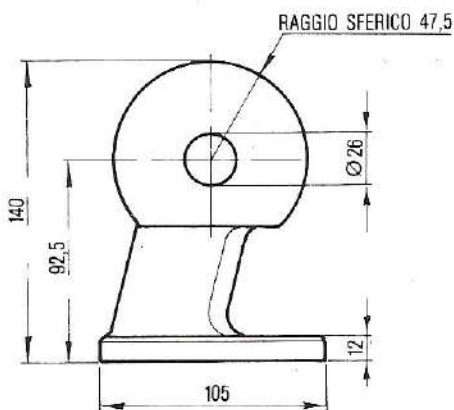
COMPLESSIVO A SFERA
PER RIBALTABILI - DIAM. 95
PORTATA MASSIMA Kg. 25.000

SUPPORTO SFERA Ø 95
Cod. 04.0178
gr. 5350



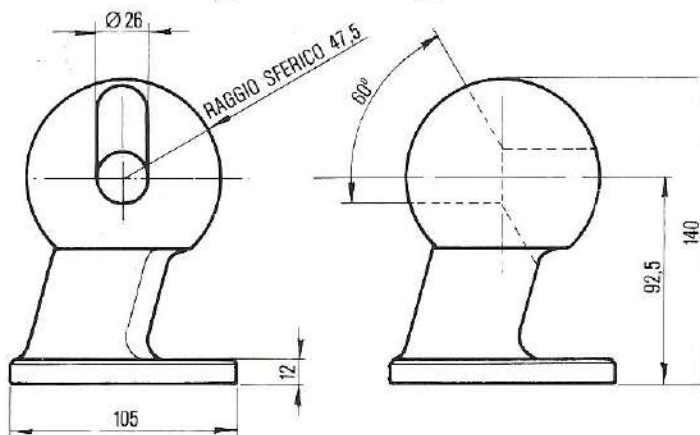
SUPPORTO SFERA 95 SENZA FORO
Cod. 04.0180

SFERA CON FORO Ø 95
Cod. 04.0182
gr. 5000

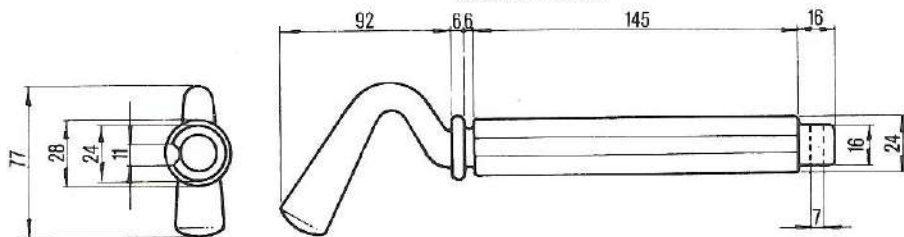


SFERA 95 SENZA FORO
Cod. 04.0184

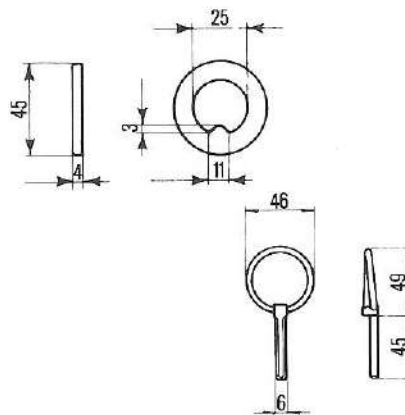
SFERA CON ASOLA Ø 95
Cod. 04.0186
gr. 4700



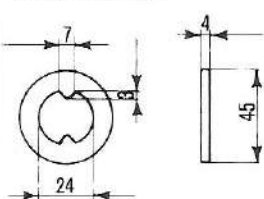
SPINOTTO
Cod. 04.0188



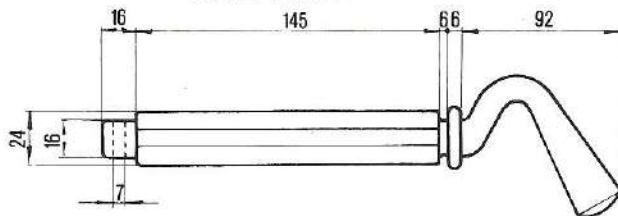
PIASTRINA
Cod. 04.0190



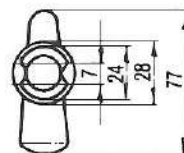
PIASTRINA
Cod. 04.0192



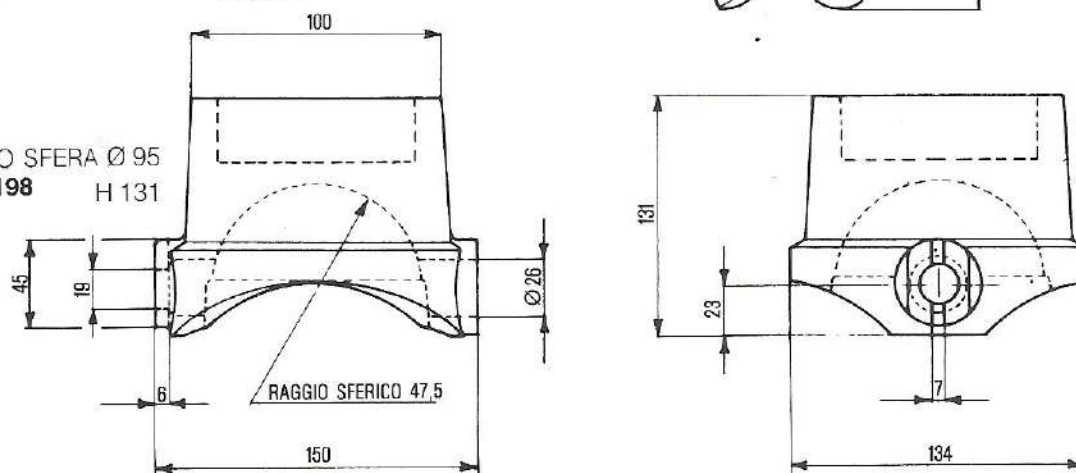
SPINOTTO
Cod. 04.0194



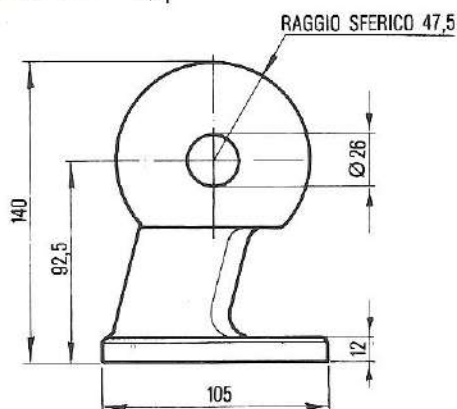
Cod. 04.0196
COPIGLIA



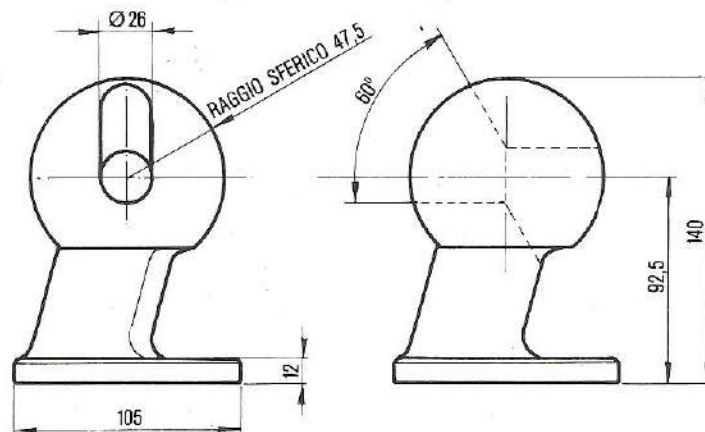
SUPPORTO SFERA Ø 95
Cod. 04.0198
gr. 6500
H 131



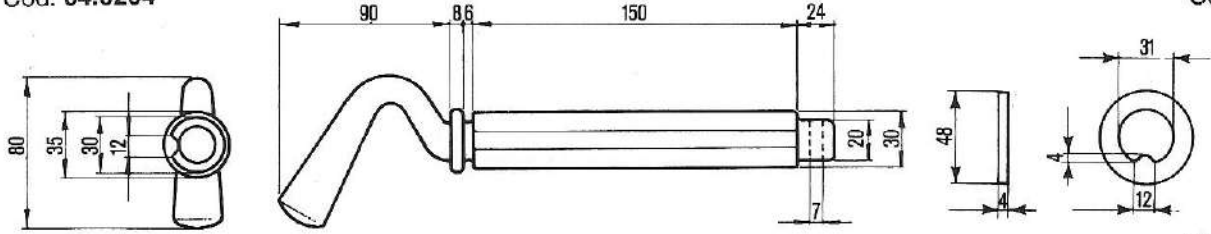
SFERA CON FORO Ø 95
Cod. 04.0200
gr. 5000



SFERA CON ASOLA Ø 95
Cod. 04.0202
gr. 4700

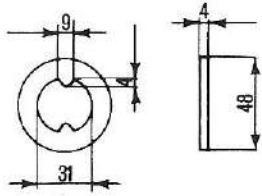


SPINOTTO gr. 1230
Cod. 04.0204

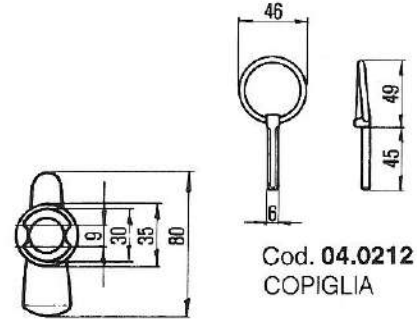
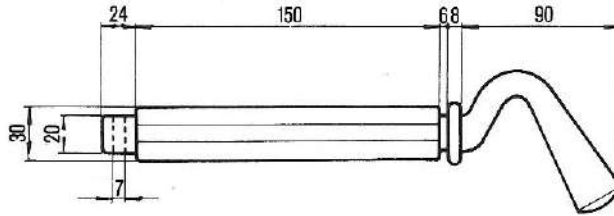


PIASTRINA
Cod. 04.0206

PIASTRINA
Cod. 04.0208

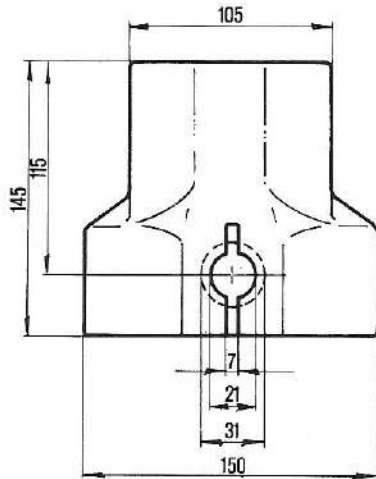


SPINOTTO gr. 1200
Cod. 04.0210



Cod. 04.0212
COPIGLIA

SUPPORTO SFERA
Cod. 04.0214 Ø 110
gr. 10200

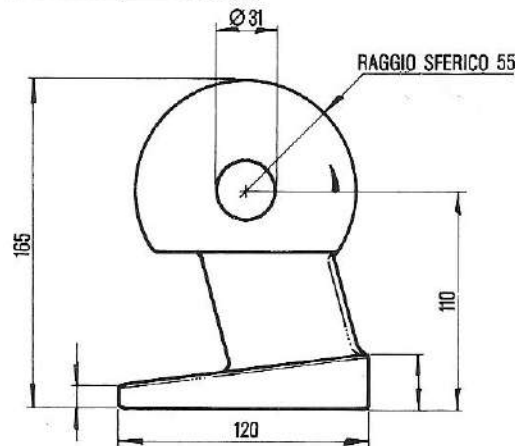


COMPLESSIVO A SFERA
PER RIBALTABILI - DIAM. 110
PORTATA MASSIMA Kg. 45.000

SUPPORTO SFERA 110
SENZA FORO
Cod. 04.0216

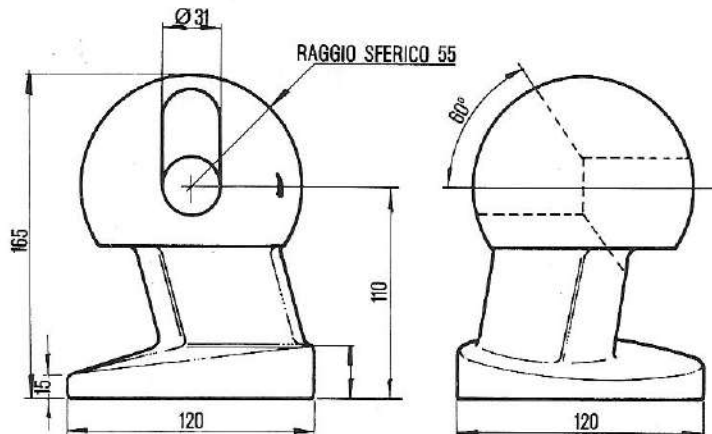


SFERA CON FORO Ø 110
Cod. 04.0218
gr. 8040



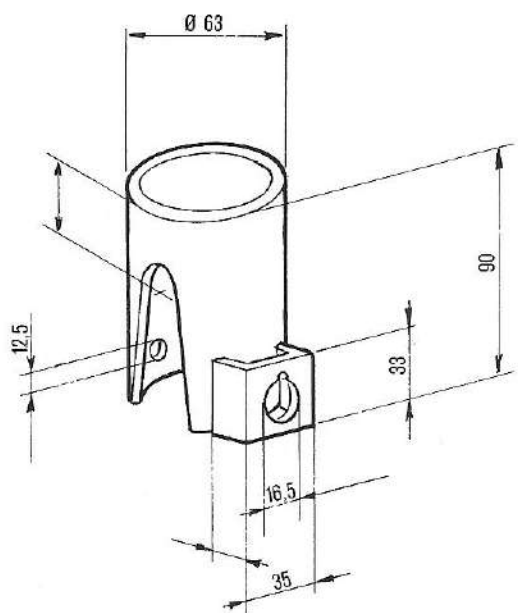
SFERA 110 SENZA FORO
Cod. 04.0220

SFERA CON ASOLA
Cod. 04.0222 Ø 110
gr. 7550



CALOTTA - FORI DIAM. 14,5
Cod. **04.0224** gr. 750

CALOTTA - FORI DIAM. 16,5-12,5
Cod. **04.0226** gr. 750

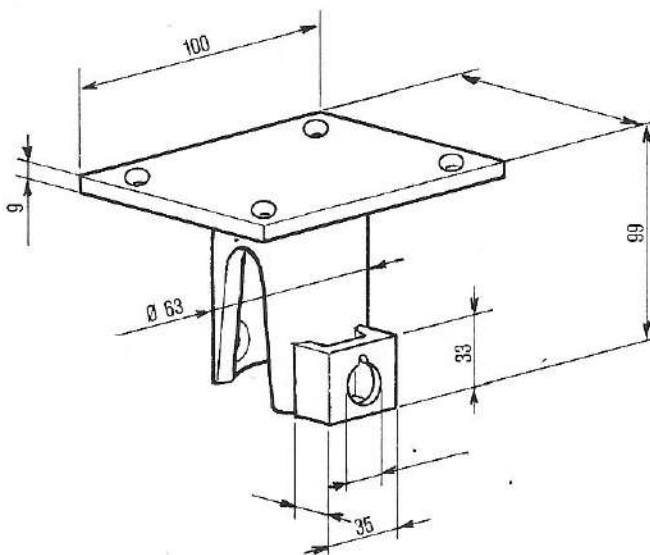


CALOTTA C/PIASTRA ZINCATA
100x80 - DIAM. 14,5
Cod. **04.0228** gr. 1550

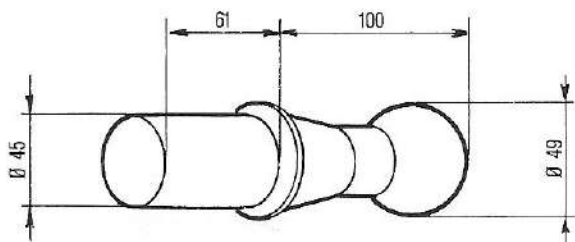
CALOTTA C/PIASTRA ZINCATA
100x80 - DIAM. 16,5-12,5
Cod. **04.0230** gr. 1550

CALOTTA C/PIASTRA 100x100 - DIAM. 14,5
Cod. **04.0232** gr. 1550 ZINCATA

CALOTTA C/PIASTRA 100x100 - DIAM. 16,5-12,5
Cod. **04.0234** gr. 1550 ZINCATA



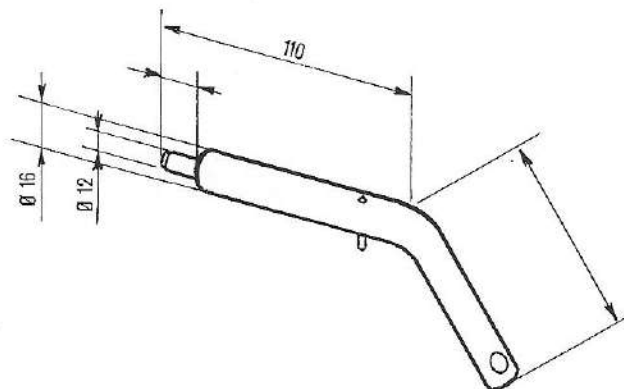
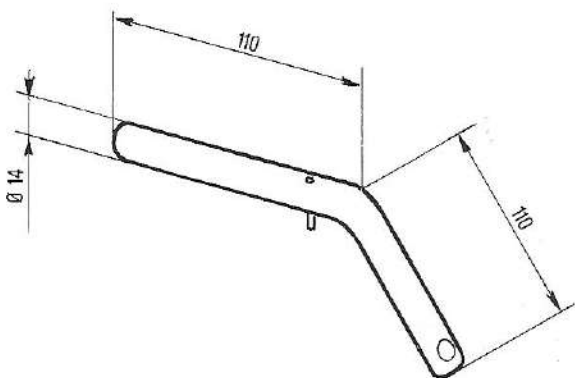
SFERA TIPO MEILLER
Cod. **04.0236**
gr. 2750



TAPPO IN PVC. PER CALOTTA MAYLER
Cod. **04.0238**
gr. 70

SPINOTTO Ø 14 ZINCATO
Cod. **04.0240**
gr. 350

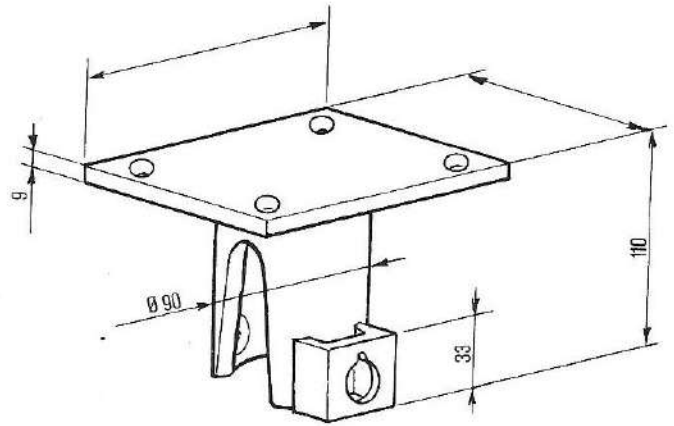
SPINOTTO Ø 16 - 12 ZINCATO
Cod. **04.0242**
gr. 300



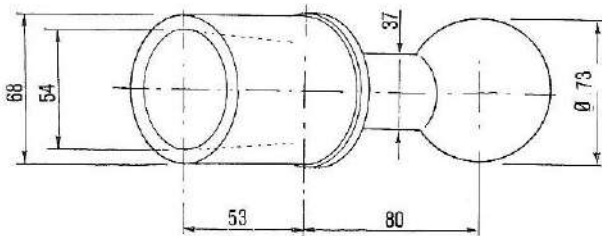
CALOTTA C/PIASTRA 110x 150 - DIAM. 16,5 ZINCATA
Cod. 04.0244

CALOTTA C/PIASTRA 110x 150 - DIAM. 18 - 14 ZINCATA
Cod. 04.0246

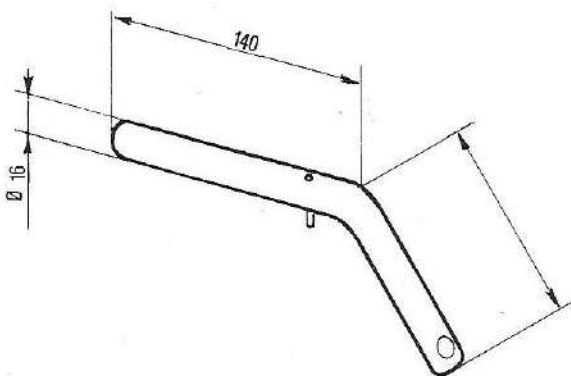
gr. 2500



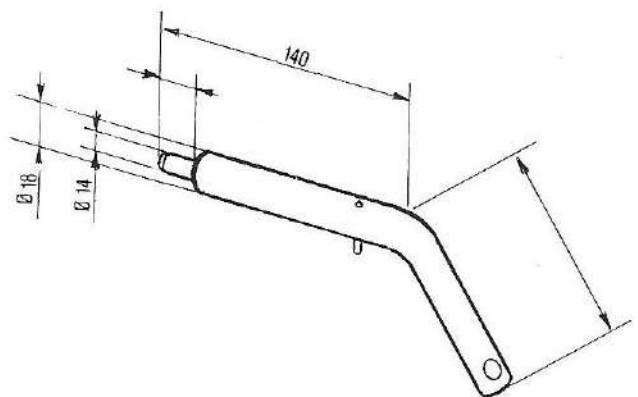
SFERA TIPO MEILLER
Cod. 04.0248
gr. 3160



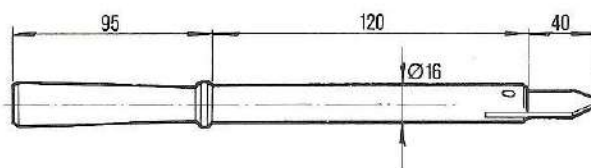
SPINOTTO Ø 16 - ZINCATO
Cod. 04.0250
gr. 360



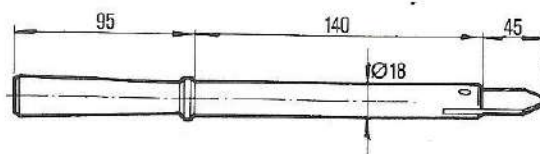
SPINOTTO Ø 14 Ø 18 ZINCATO
Cod. 04.0252
gr. 450



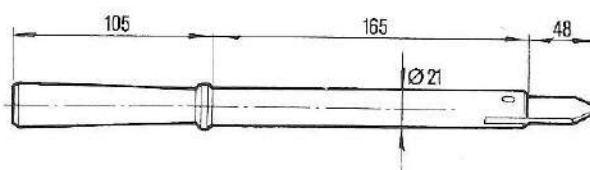
SPINOTTO
Cod. **04.0254**
gr. 350



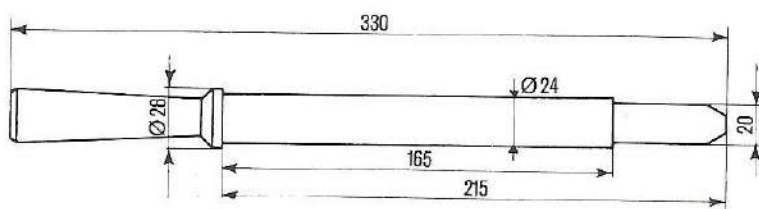
SPINOTTO
Cod. **04.0256**
gr. 475



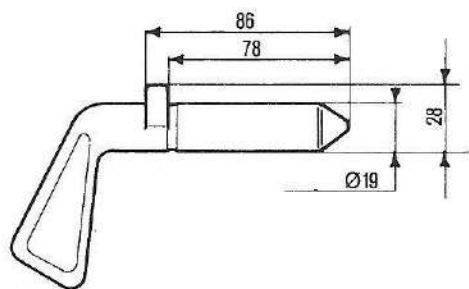
SPINOTTO
Cod. **04.0258**
gr. 700



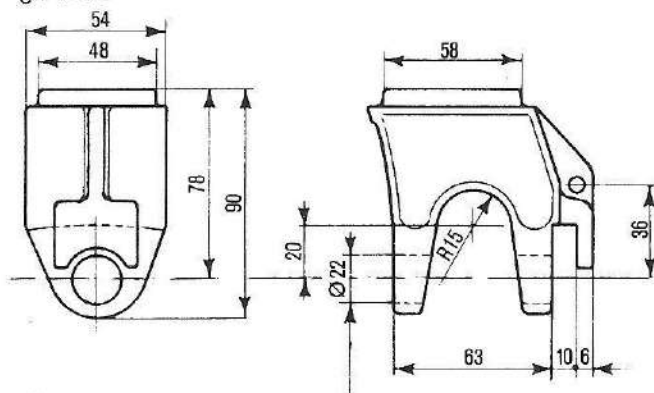
SPINOTTO
Cod. **04.0260**
gr. 1000



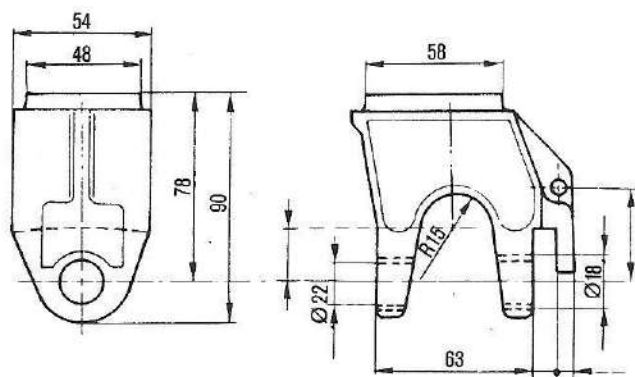
SPINOTTO
Cod. 04.0302
gr. 300



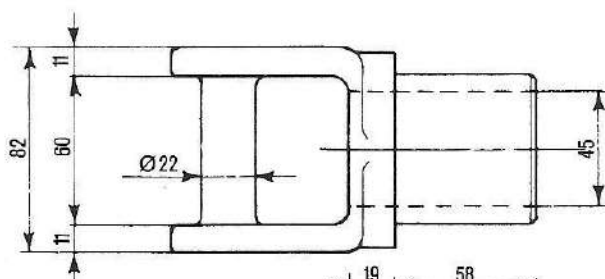
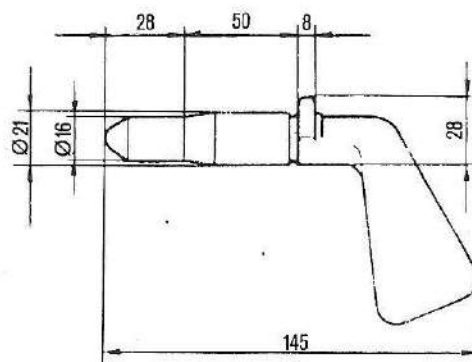
BOCCA DI LUPO
Cod. 04.0304
gr. 1200



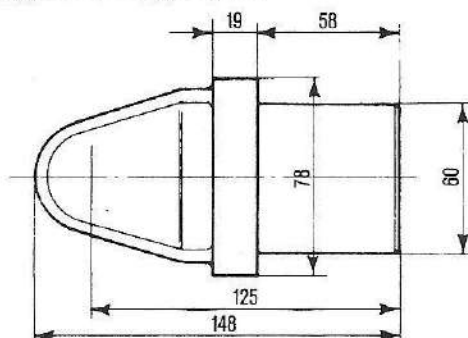
BOCCA DI LUPO
Cod. 04.0306
gr. 1210



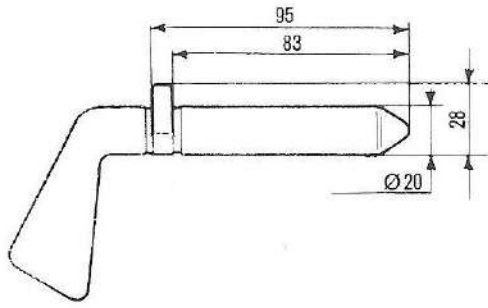
SPINOTTO
Cod. 04.0308
gr. 280



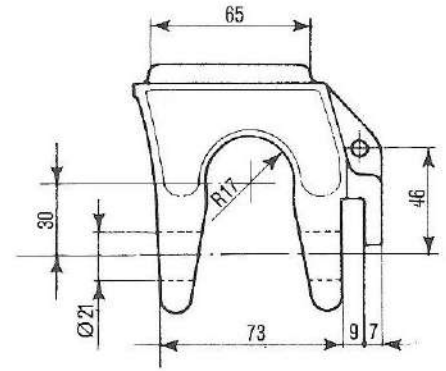
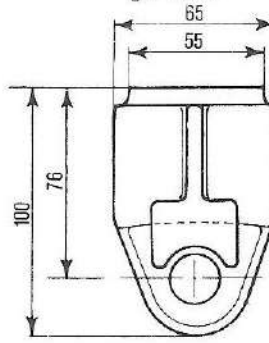
FORCELLA $\text{Ø}60$
Cod. 04.0310
gr. 1650



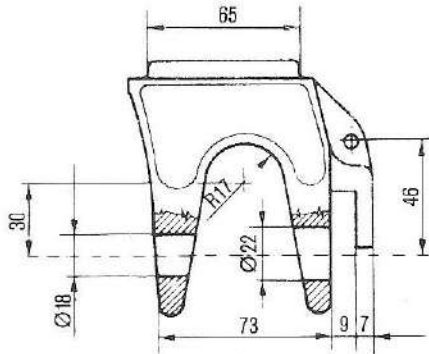
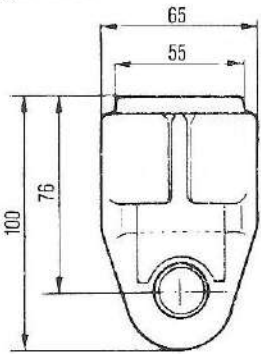
SPINOTTO
Cod. 04.0312
gr. 320



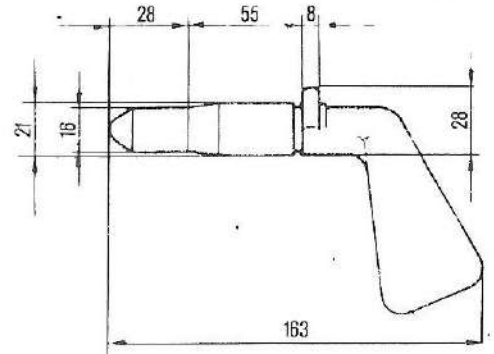
BOCCA DI LUPO
Cod. 04.0314
gr. 1600



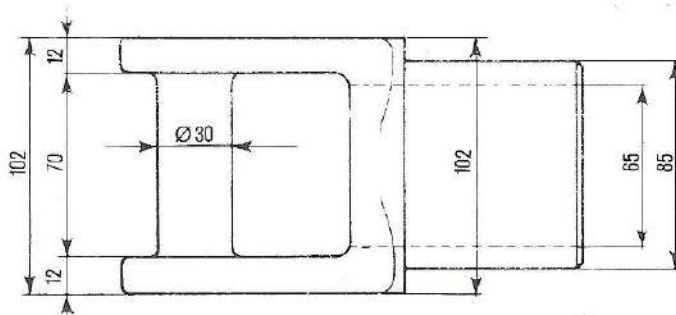
BOCCA DI LUPO
Cod. 04.0316
gr. 1630



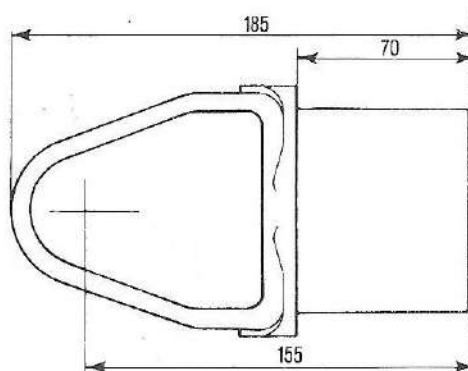
SPINOTTO
Cod. 04.0318
gr. 300



FORCELLA Ø 80
Cod. 04.0320



FORCELLA Ø 85
Cod. 04.0322
gr. 4800



FORCELLA ALLUNGATA

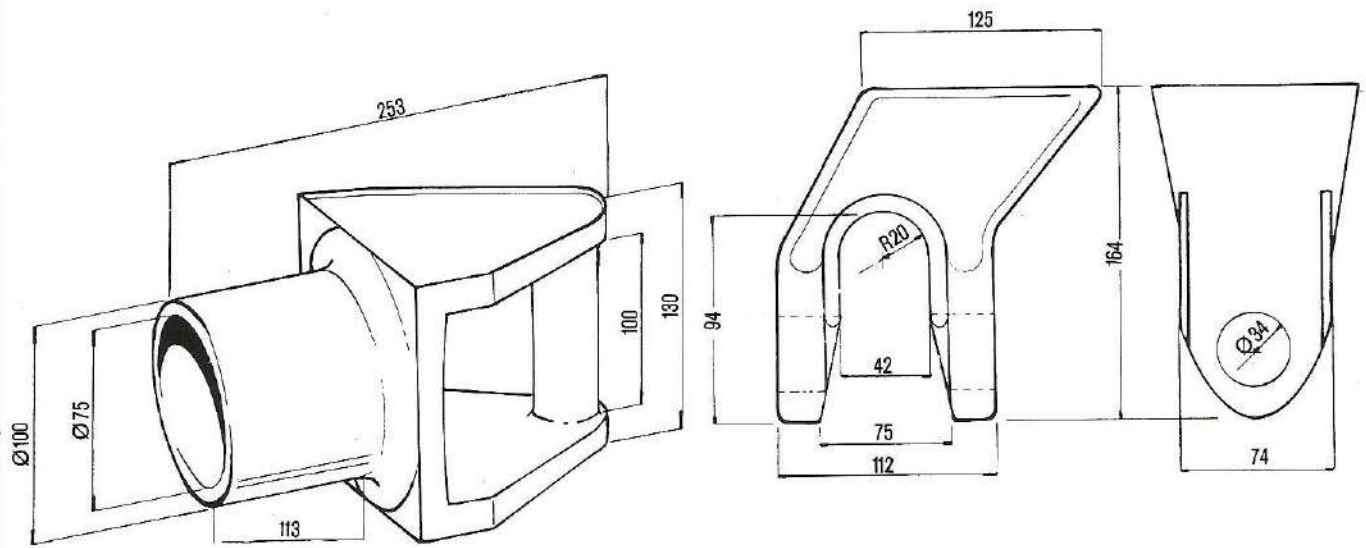
Cod. 04.0324

gr. 9800

SUPPORTO

Cod. 04.0326

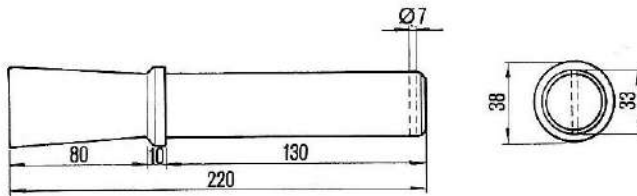
gr. 5300



SPINOTTO

Cod. 04.0328

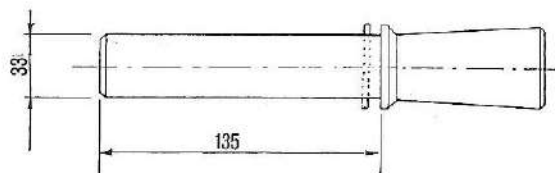
gr. 1450



SPINOTTO

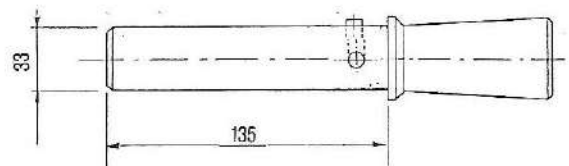
Cod. 04.0330

gr. 1300



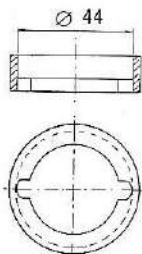
SPINOTTO

Cod. 04.0332



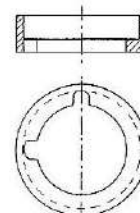
RONDELLA

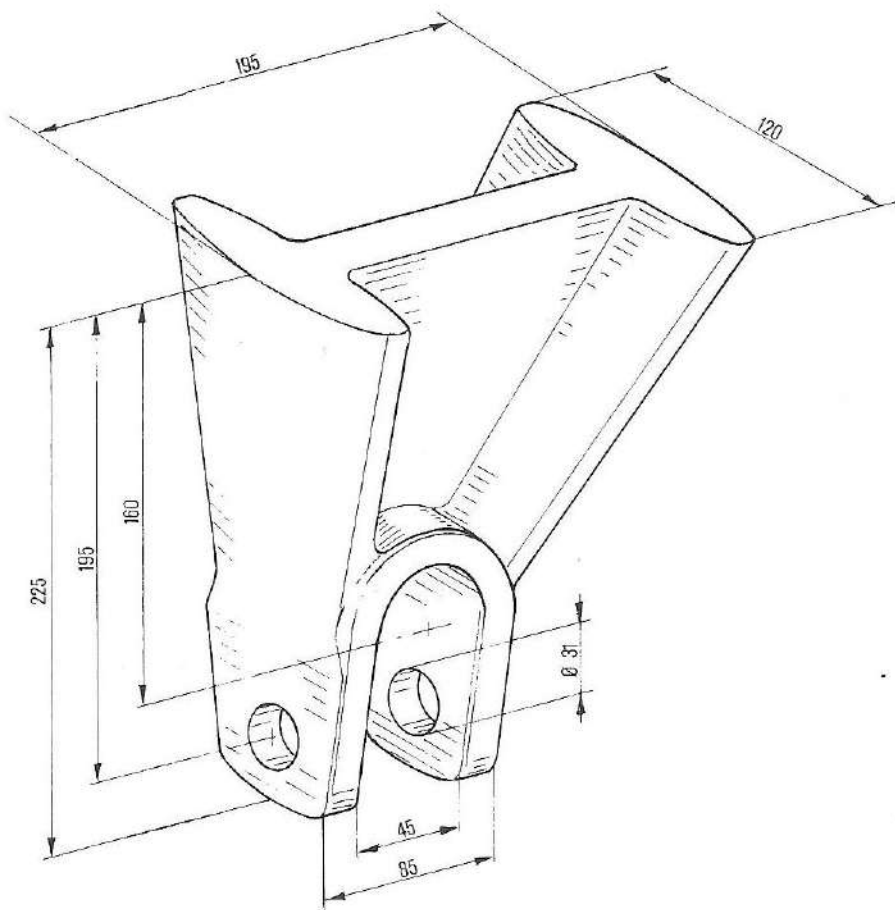
Cod. 04.0334



RONDELLA

Cod. 04.0336



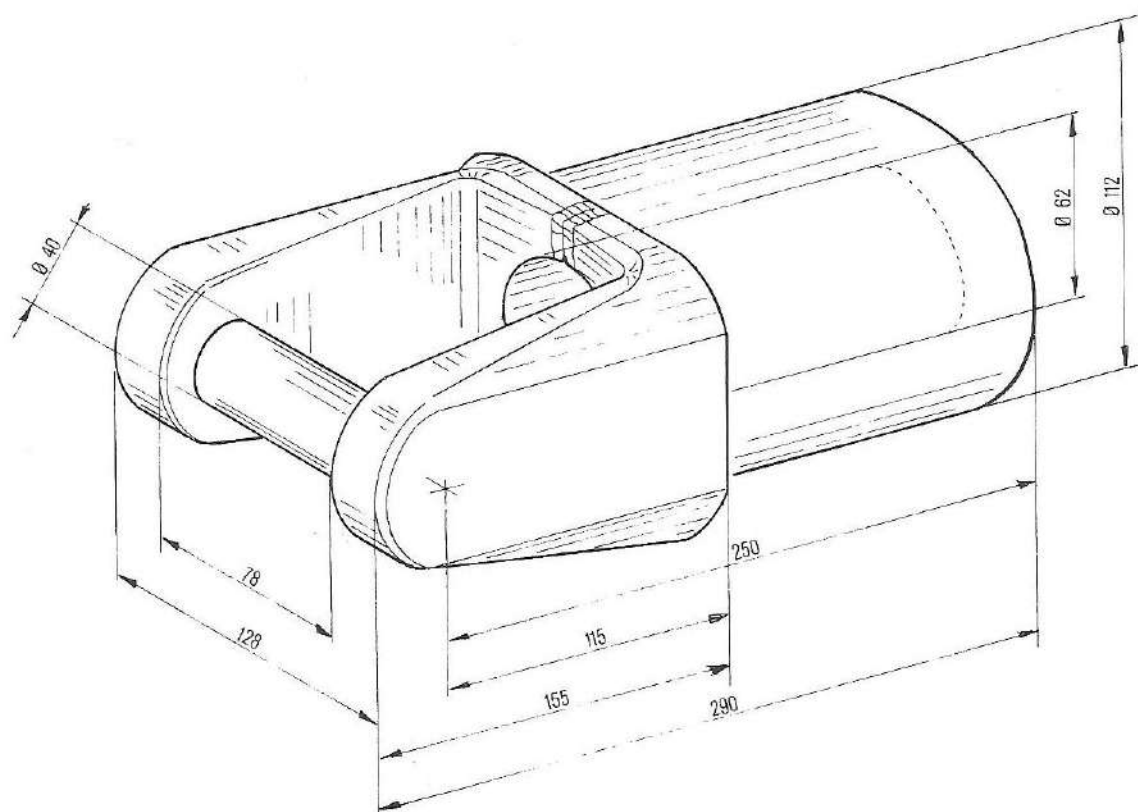


SUPPORTO SAIM
 Cod. **04.0338**
 gr. 9800

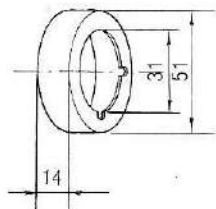
FORCELLA SAIM $\text{Ø } .96$
 Cod. **04.0340**

FORCELLA SAIM $\text{Ø } 100$
 Cod. **04.0342**

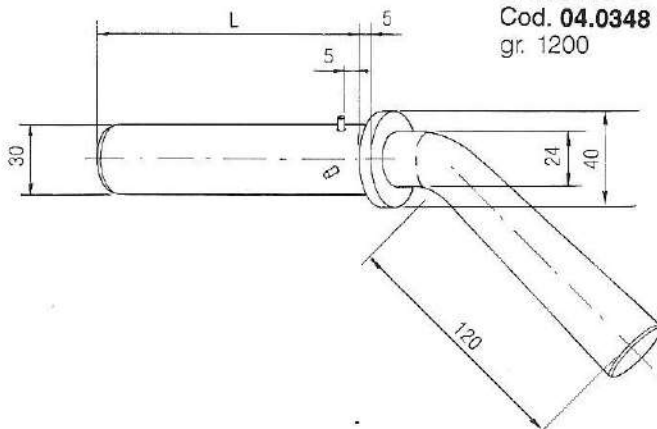
FORCELLA SAIM $\text{Ø } 112$
 Cod. **04.0344**
 gr. 13400



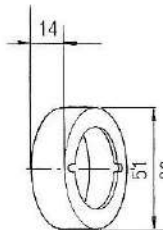
RONDELLA
Cod. **04.0346**
gr. 250



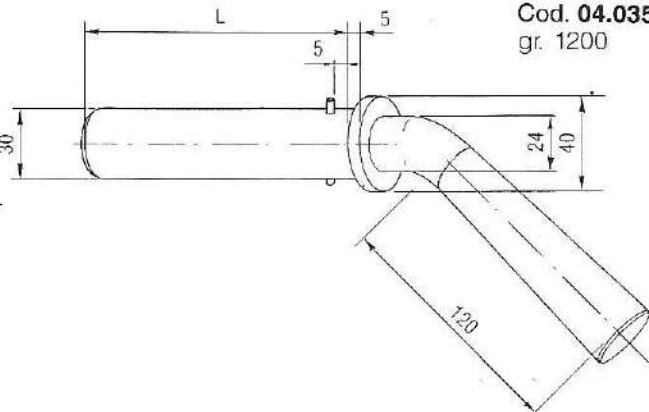
SPINOTTO L = 110 Ø 30
Cod. **04.0348**
gr. 1200



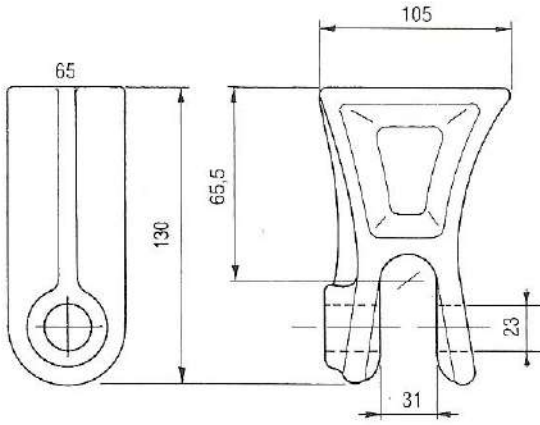
RONDELLA
Cod. **04.0350**
gr. 250



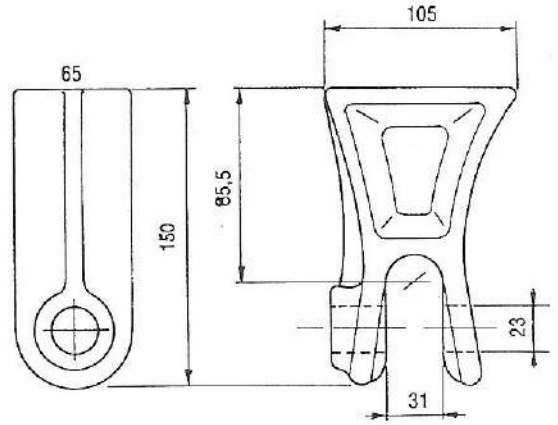
SPINOTTO L = 110 Ø 30
Cod. **04.0352**
gr. 1200



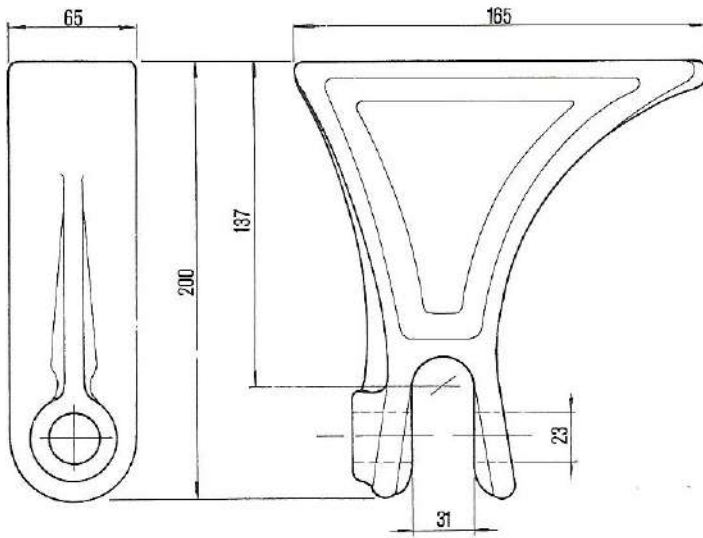
SUPPORTO
Cod. 04.0402
gr. 2800



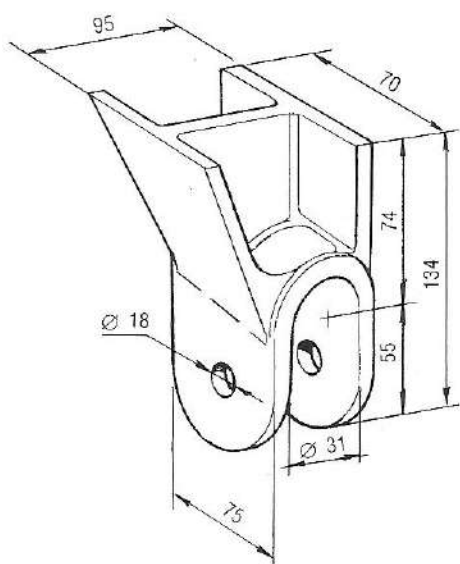
SUPPORTO
Cod. 04.0404
gr. 3400



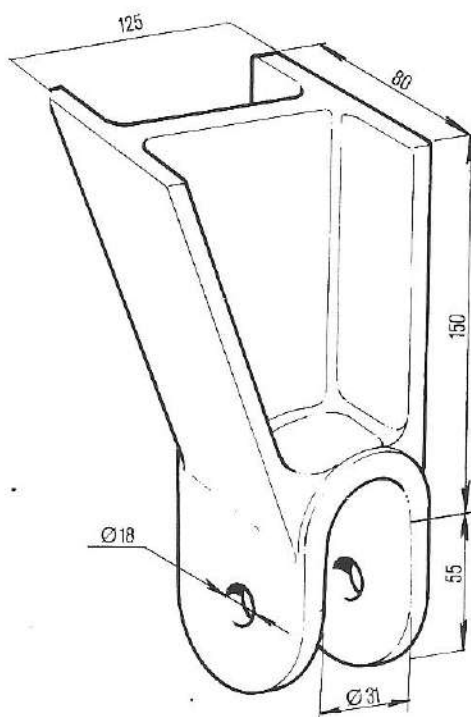
SUPPORTO
Cod. 04.0406
gr. 4800



SUPPORTO
Cod. **04.0410**
gr. 2700

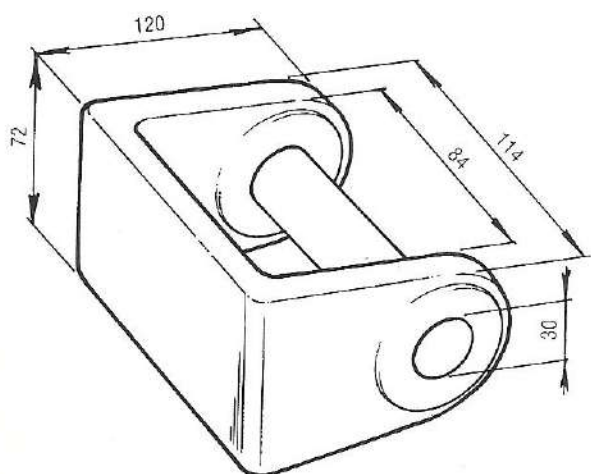


SUPPORTO
Cod. **04.0412**
gr. 4520

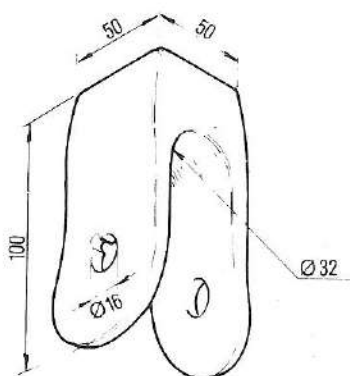


FORCELLA C/PERNO
Cod. **04.0414**

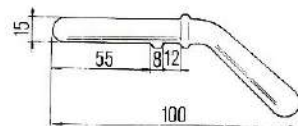
gr. 2800



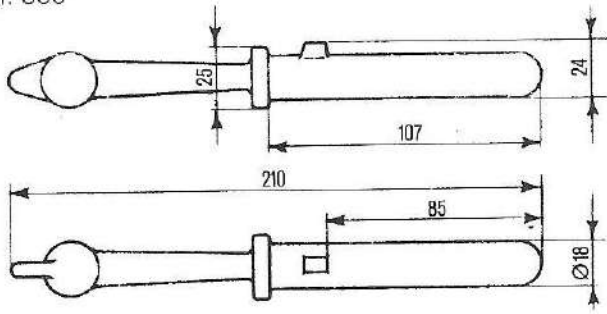
SUPPORTO
Cod. **04.0422**
gr. 750



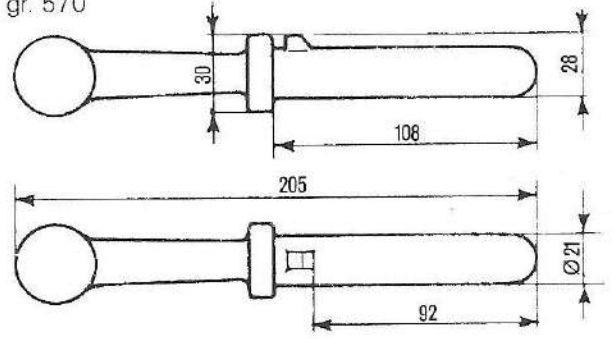
SPINA FORGIATA
Cod. **04.0424**
gr. 220



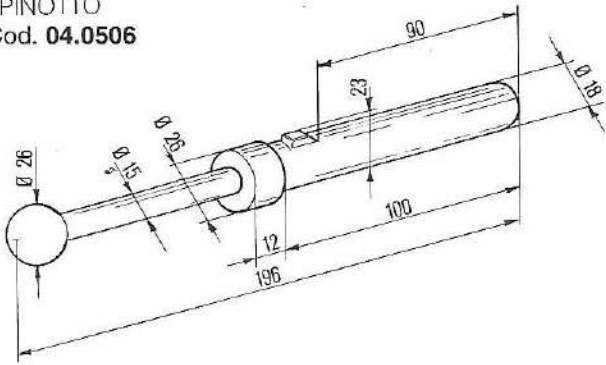
SPINOTTO
Cod. 04.0502
gr. 350



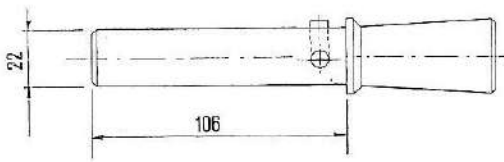
SPINOTTO
Cod. 04.0504
gr. 570



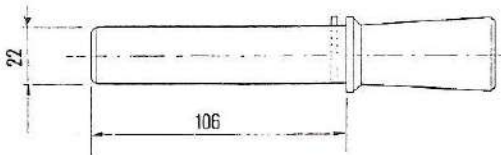
SPINOTTO
Cod. 04.0506



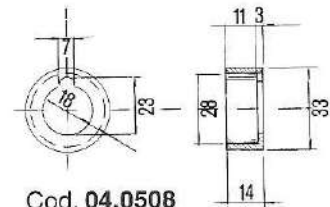
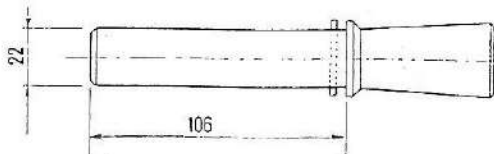
SPINOTTO
Cod. 04.0512



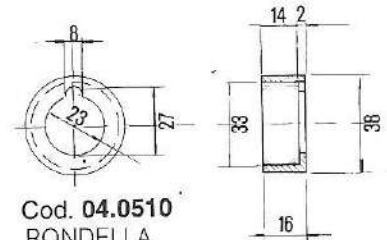
SPINOTTO
Cod. 04.0516
gr. 420



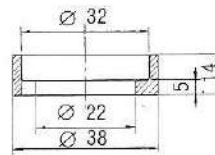
SPINOTTO
Cod. 04.0518
gr. 420



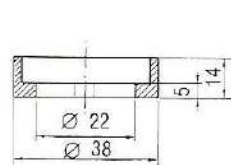
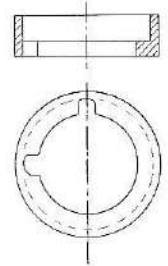
Cod. 04.0508
RONDELLA
gr. 50



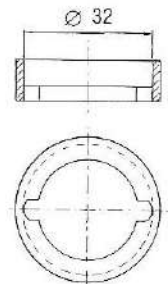
Cod. 04.0510
RONDELLA
gr. 60



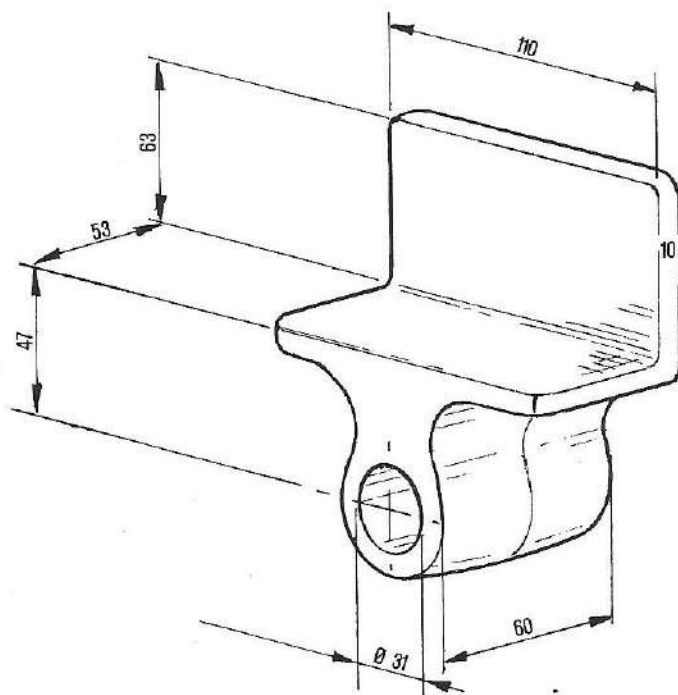
RONDELLA
Cod. 04.0514



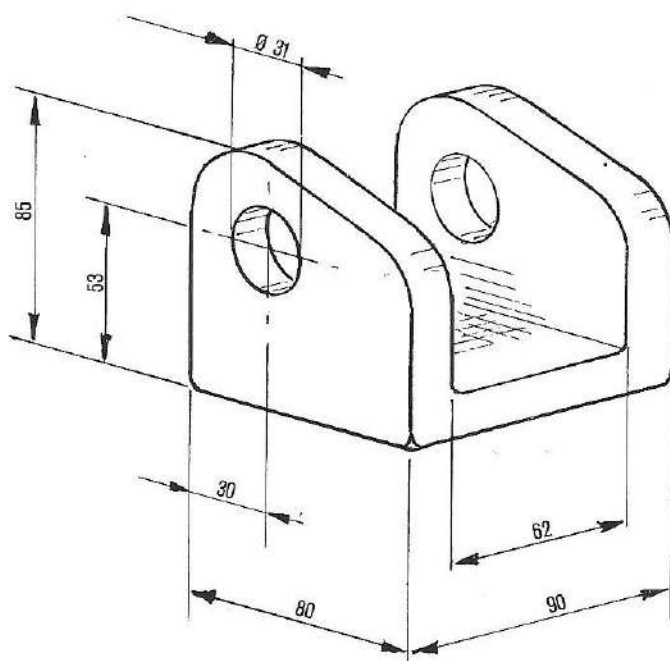
RONDELLA
Cod. 04.0520



CERNIERA
Cod. 04.0602



SUPPORTO
Cod. 04.0604



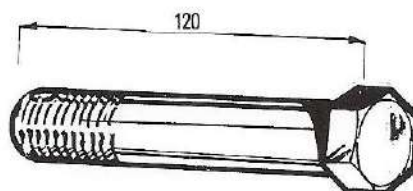
DADO M 30
Cod. 04.0606

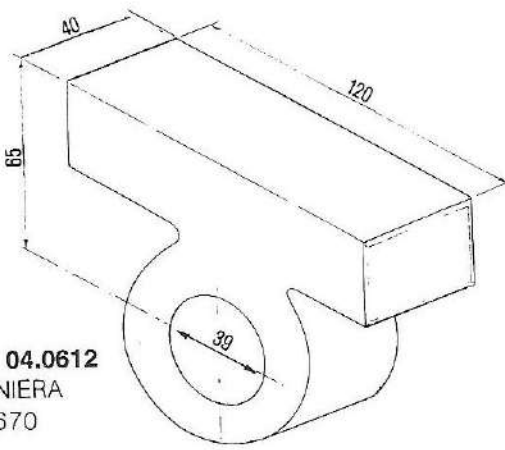


RONDELLA
Cod. 04.0608

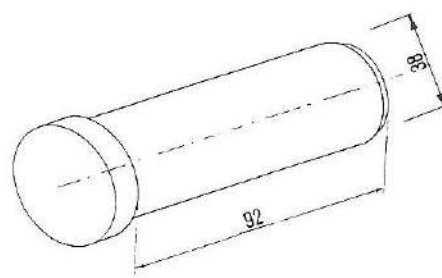


BULLONE M 30
Cod. 04.0610

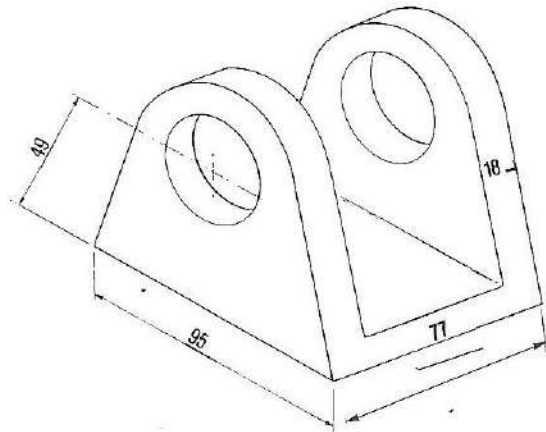




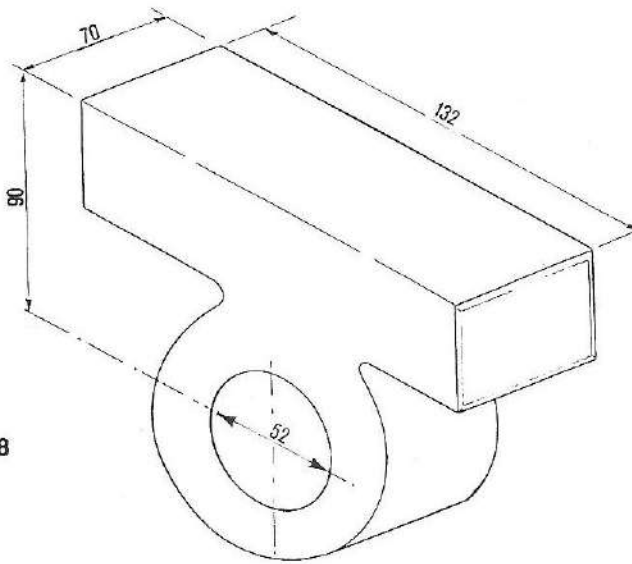
Cod. **04.0612**
CERNIERA
gr. 1670



SPINOTTO
Cod. **04.0614**
gr. 600

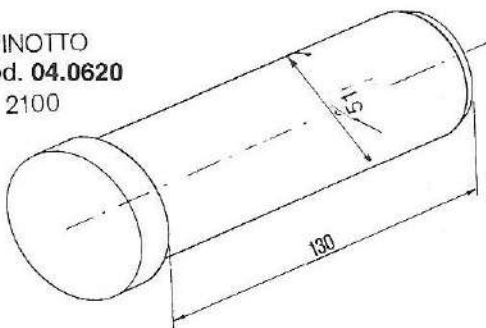


SUPPORTO
Cod. **04.0616**
gr. 1450

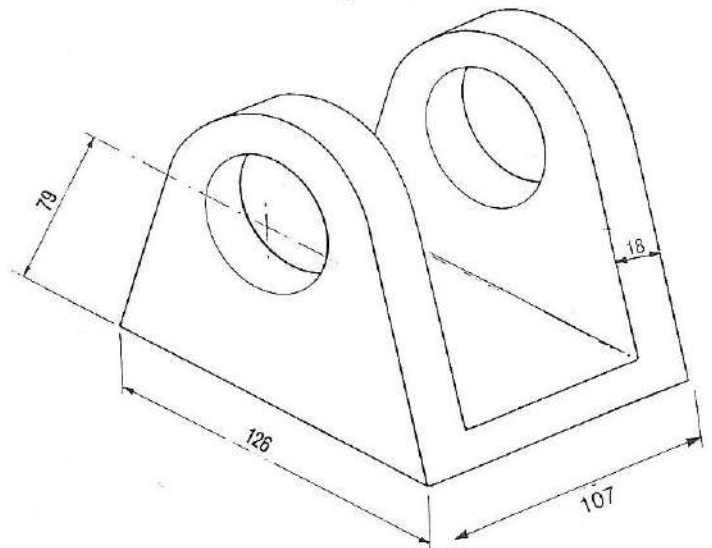


CERNIERA
Cod. **04.0618**
gr. 5000

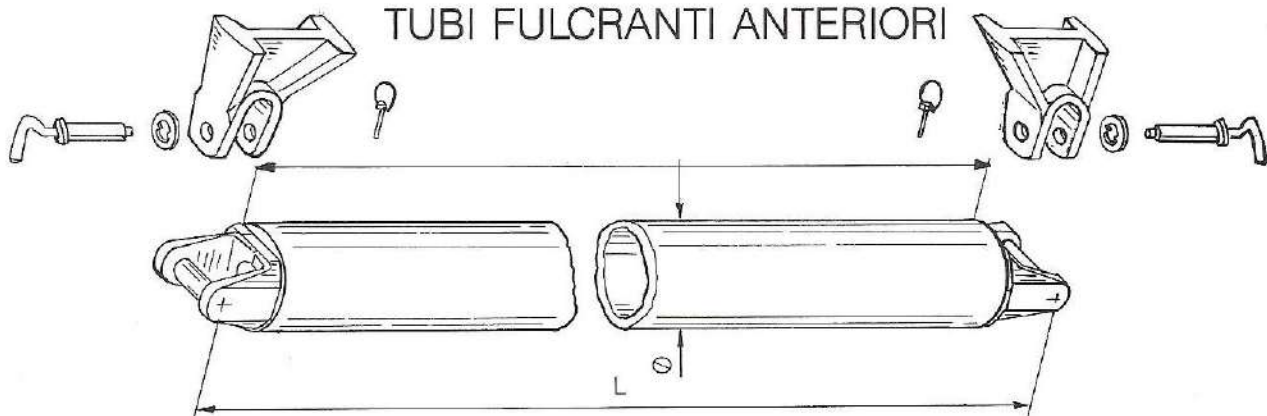
SUPPORTO
Cod. **04.0622**
gr. 2110



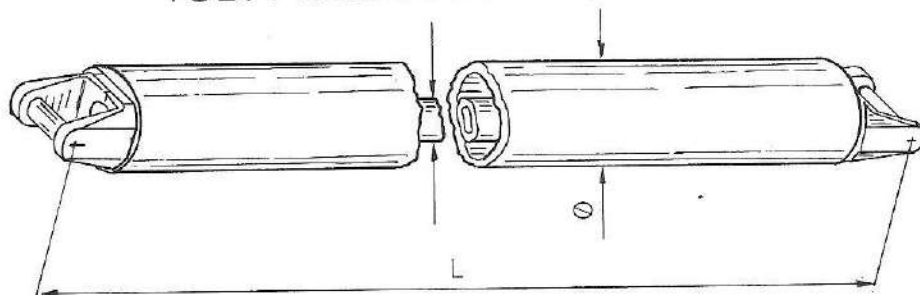
SPINOTTO
Cod. **04.0620**
gr. 2100



TUBI FULCRANTI ANTERIORI

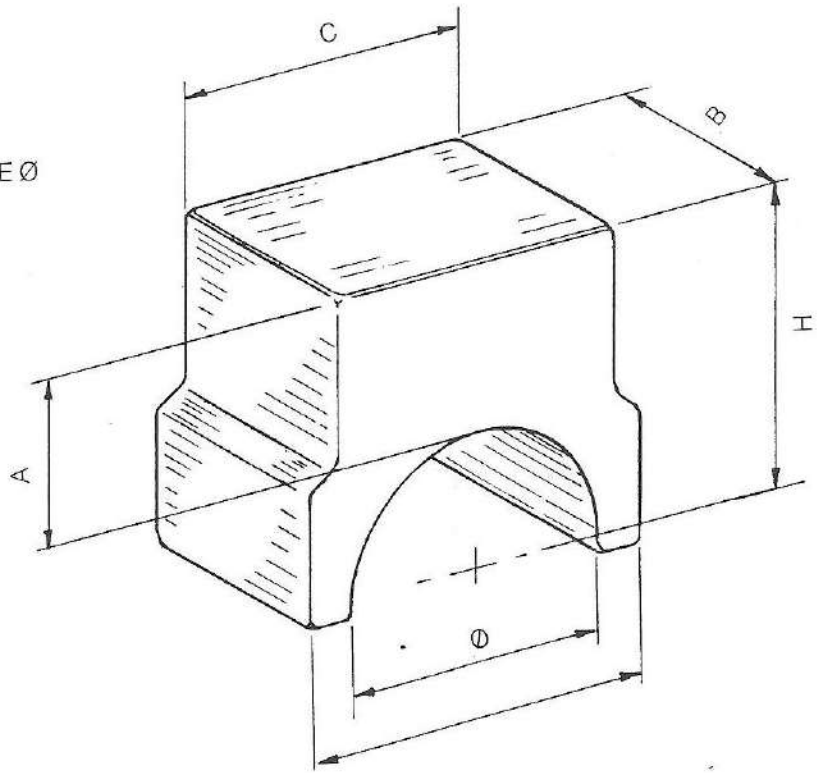


TUBI FULCRANTI POSTERIORI



CODICE CODE	PESO KG WEIGHT	DESCRIZIONE DESCRIPTION	DIMENSIONI DIMENSIONS	COD. FORCELLE CODE FORKS	PORTATA KG LOAD CAP. KG
04.0702	31.0	TUBO ANTERIORE	Ø76X10 L=1800	04.0310	2500/5500
04.0704	41.0	TUBO POSTERIORE	Ø76X10 L=1800		
04.0706	40.0	TUBO ANTERIORE	Ø76X12,5 L=2000	04.0310	2500/5500
04.0708	50.0	TUBO POSTERIORE	Ø76X12,5 L=2000		
04.0710	51.0	TUBO ANTERIORE	Ø101X10 L=2000	04.0322	7000/10000
04.0712	72.0	TUBO POSTERIORE	Ø101X10 L=2000		
04.0714	65.0	TUBO ANTERIORE	Ø108X12,5 L=2050	04.0322	12000/15000
04.0716	86.0	TUBO POSTERIORE	Ø108X12,5 L=2050		
04.0718	72.0	TUBO ANTERIORE	Ø121X12,5 L=2050	04.0322	18000/20000
04.0720	93.0	TUBO POSTERIORE	Ø121X12,5 L=2050		
04.0722	81.0	TUBO ANTERIORE	Ø121X12,5 L=2050	04.0324	20000/25000
04.0724	102.0	TUBO POSTERIORE	Ø121X12,5 L=2050		
04.0726	88.0	TUBO ANTERIORE	Ø121X12,5 L=2050	04.0324	20000/25000
04.0728	109.0	TUBO POSTERIORE	Ø121X12,5 L=2050		
04.0730	100.0	TUBO ANTERIORE	Ø127X16 L=2050	04.0324	25000/28000
04.0732	121.0	TUBO POSTERIORE	Ø127X16 L=2050		
04.0734	107.0	TUBO ANTERIORE	Ø127X16 L=2050	04.0340	25000/28000
04.0736	128.0	TUBO POSTERIORE	Ø127X16 L=2050		
04.0738	117.0	TUBO ANTERIORE	Ø140X16 L=2080	04.0344	30000/35000
04.0740	138.0	TUBO POSTERIORE	Ø140X16 L=2080		
04.0742	135.0	TUBO ANTERIORE	Ø152X17,5 L=2080	04.0344	38000/45000
04.0744	156.0	TUBO POSTERIORE	Ø152X17,5 L=2080		

SUPPORTO POSTERIORE Ø



CODICE CODE	PESO KG WEIGHT	Ø	A	B	C	H
04.0802	7.700	101	70	90	110	120
04.0804	8.100	108	70	90	110	124
04.0806	7.800	121	70	90	110	130
04.0808	8.000	127	67	90	110	130
04.0810	10.400	140	90	90	100	160
04.0812	8.300	152	48	90	138	124

SUPPORTO POSTERIORE Ø 157

Cod. 04.0814

gr. 6700

